

# aluminium venetian blinds

25mm SLIMLINE,  
TWI-NIGHTER and  
50mm CLASSIC



*Luxaflex*<sup>®</sup>

WINDOW FASHIONS

[www.luxaflex.co.nz](http://www.luxaflex.co.nz)



## 25mm SLIMLINE, TWI-NIGHTER AND 50mm CLASSIC

MANUFACTURED FROM UP TO 97% RECYCLED MATERIAL

Simple and stylish, providing a timeless design that suits many interior styles. In just seconds you can effortlessly control light and shade, ventilation and privacy. LUXAFLEX® ALUMINIUM VENETIANS are Eco-friendly manufactured from up to 97% recycled material, including the 0.215 heavy duty slat – the thickest in the market. They're not only good for the environment, their distinctive sleek design is a great looking way to transform any room. LUXAFLEX® ALUMINIUM VENETIANS are built to last, making them ideal for automated control.

Made of high tensile bounce back 6011 Aluminium Alloy (Excludes Limited Edition) and available in 25mm & 50mm widths.

### CARE AND CLEANING

Caring for your Aluminium Venetian Blinds is easy by simply closing the slats and then dusting them with a feather duster, soft-haired brush or soft cloth. If the stains are very stubborn, it is best to clean them with a damp cloth. You can also use a vacuum cleaner at the lowest setting. Another option is to gently spray-clean larger surfaces and then allow them to dry well. You can also have the blinds cleaned by a professional cleaning service.



### HEADRAIL

The 25mm Aluminium Venetian Blind uses a 26mm wide x 26mm deep strip rolled from pre-coated 0.5mm aluminium zinc alloy coated steel finished in a thermosetting polyester coating over a chromated primer, adding strength and rigidity to the headrail.

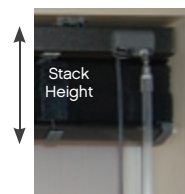
### BOTTOMRAIL

The 25mm Aluminium Venetian Blind uses a D shaped 22.5mm x 10mm lock seamed tubular section, roll formed from 0.5mm aluminium zinc alloy coated steel, finished in a thermosetting polyester coating over a chromated primer. This fully enclosed bottomrail adds weight and maximum strength for rigidity. The coating process meets Coil Coating Standards (AS/NZS2728:2007) to ensure paint adhesion flexibility and resistance to solvents and has been stove enamelled for greater corrosion resistance.

### LIMITATIONS

Aluminium Venetian Blind limitations have been developed to ensure the Blind operates and performs to maximum potential. Measurements outside of these parameters may not perform to our Quality Standards and will be void of warranty.

	Minimum Width	Maximum Width	Minimum Height	Maximum Height	Stack Height
25mm	210mm	3300mm	250mm	3200mm	(Drop x 0.34)+0.45
50mm	300mm	4000mm	180mm	3500mm	(Drop x 0.50)+0.45
Twi-Nighter	210mm	3300mm	250mm	3200mm	(Drop x 0.34)+0.45





## ENERGY BENEFITS

The primary purpose of interior window coverings is to provide visual comfort, reduce glare and diffuse incoming sunlight to comfortable intensity levels. This way free renewable daylight can be exploited to the maximum. There is less need for artificial light, less heat emanating from it so less energy is needed for cooling. Interior window coverings are an essential component in high performance daylight management. Aluminium Venetian Blinds are effective reflectors of heat, particularly in light and metallic colours.

## ENVIRONMENTAL BENEFITS

The adjustable light control function of Aluminium Venetian Blinds means that the use of natural light can be maximised, which is important for well being as well as reducing the need for artificial lighting and temperature control.

Perforated Aluminium Venetian Blinds provide shading while allowing the building occupants a view to the outside, reducing the feeling of disconnection from the outside world.

Aluminium Venetian Blinds are made from up to 97% recycled materials (Excludes Limited Edition). The Aluminium Venetian Slat has been tested and does not exceed the maximum VOC (Volatile Organic Compound) criteria specified by the Green Building Council of Australia (IEQ-11).

## THERMOSTOP® BENEFITS

Thermostop® Slats conduct less heat than standard slats, improving insulation. Thermostop® Slats have a special coating on the concave side of the slat, making Thermostop® Slats a very good reflector. In summer this helps reflect solar energy back to the outside lowering inside temperatures and reducing the need for cooling. In winter, fully closed Thermostop® Coated Venetians can be very effective in keeping the heat indoors.

## FINISHES

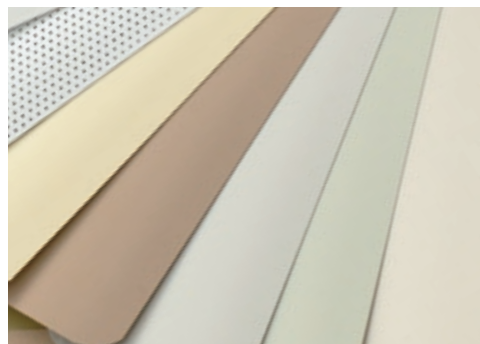
Matt, Gloss, Satin, Brushed, Marble, Perforated and Thermostop® Slat (refer swatch for detail).

## COLOUR CO-ORDINATION

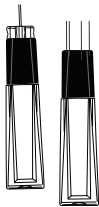
The slats have been colour coordinated to the headrail, bottomrail and plastic components for a complete, consistent and appealing blind. (Limited Edition colour matched only).

## QUALITY

Hunter Douglas Limited, supplier of Aluminium Venetian Blind components is a quality endorsed company certified as complying with the requirements of AS/NZS ISO 9001:2000. 25mm Aluminium Venetian Blinds (excluding the Limited Edition Venetian Blind) are fitted with a wand clutch to prevent over winding and to protect the tilter. They also feature the additional back up of a tilt stop on the tilt rod to limit the tilt rod rotation at the blind's fully closed position.



## OPERATING OPTIONS



### CORD AND WAND

The Slimline and Twi-nighter Venetian Blinds are supplied with a lift cord and tilt wand. The standard tilting mechanism is fitted with a unique protection to prevent the mechanism slipping and the ladder cords from being stretched, providing precise slat closure. Using the precise tilting mechanism the slats can be positioned to each desired closing position.



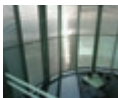
### AUTOMATED TILT AND RAISE AND AUTO-TILT

The angle of the slats are adjusted to suit your requirements by a remote control. The blind is operated by a built in electric motor. There is a choice of switches, group operation, infrared remote, radio remote or solar control. 25mm Blinds are operated by 24V motors and 50mm Blinds are operated by 240V motors. Auto Tilt option allows you to adjust the operation of the slat only with a battery operated motor and remote. (25mm only)



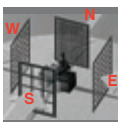
### SPECIALTY SHAPES

Specialty shapes are available with the Standard Slimline, 50mm Classic Blinds. These include Sloping Bottom and Sloping Head.



### THERMOSTOP® SLAT

The Thermostop® Slat is based on a slat which has a special coating on the concave side, giving an emission of heat radiation three times lower (Emission value 30% instead of 90% for a normal painted slat). This special finish increases the thermal resistance in winter and decreases the inside heat transfer in summer.



### PERFORATIONS

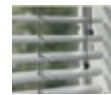
Various perforation options are available. This innovative solution allows you to choose the shade solution suitable for different facade orientations (8% on south facade, 4% on east, north and west facade). These perforation options provide the ideal solution for optimal daylight regulation. The ideal solution when window reveals are not large enough for Sunscreen Rollershade creations.



### CHILD SAFETY

The new Aluminium Venetian Blind range is available with a unique stylish Break-Thru Cord Connector, which helps to minimise cords and simplify operation. It is also designed to break apart should weight or pressure be applied.

## MODELS



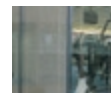
### STANDARD ALUMINIUM VENETIAN

Aluminium Venetian Blinds are available in a range of modern designs and finishes in slat widths of 25mm and 50mm.



### TWI-NIGHTER VENETIAN BLINDS

Has been designed to eliminate light filtering through slats. The positioning of rout holes and closure of the slats provides minimal exposure of incoming light offering greater privacy and light control.



### IN BETWEEN GLASS

Fits between glass panels of a double glazed window (50mm cavity). It provides superior energy efficiency and can be adjusted with a tilt control knob or remote control.

## FIRE RETARDANT



Complies with the General Requirements of the Building Code of Australia for Fire Hazard properties of materials in buildings.

Ignitability Index	0 [Range 0-20]
Heat Evolved Index	0 [Range 0-10]
Spread of Flame Index	0 [Range 0-10]
Smoke Developed Index	0-1 [Range 0-10]

Lower numbers indicate better performance.

## Comfort Rating Guide



### 25mm and Twi-Nighter®

Cotton	◆◆◆◆◇	◆◆◆◆◆	◆◆	◆◆◆◆◆	◆◆◆◆◆
Grey Sheen	◆◆◆◆◇	◆◆◆◆◆	◆◆	◆◆◆◆◆	◆◆◆◆◆
Bright Silver	◆◆◆◆◇	◆◆◆◆◆	◆◆	◆◆◆◆◆	◆◆◆◆◆
Ebony	◆◆◇	◆◆◆◆◆	◆◆	◆◆◆◆◆	◆◆◆◆◆

### 25mm Slimline, Twi-Nighter® and 50mm Classic

Black	◆◆◇	◆◆◆◆◆	◆◆	blockout	◆◆◆◆◆
Bright Silver	◆◆◆◆◇	◆◆◆◆◆	◆◆	blockout	◆◆◆◆◆
Clean Brilliance White	◆◆◆◆◇	◆◆◆◆◆	◆◆	blockout	◆◆◆◆◆
Crisp Cotton	◆◆◆◆◇	◆◆◆◆◆	◆◆	blockout	◆◆◆◆◆

◆ No protection/performance, ◆◆ Low level of protection/performance, ◆◆◆ Medium level of protection/performance  
 ◆◆◆◆ High level of protection/performance, ◆◆◆◆◆ Highest level of protection/performance

The comfort rating is designed to assist you in choosing the right window covering for each situation. Hunter Douglas Limited has developed the comfort rating with assistance from Canesis Pty Ltd - an independent Australian Fibre and Textile Research and Development Company.

- Heat Protection refers to the ability of material to keep heat away.
- A high insulation rating is recommended where insulation is important for the comfort of the occupants and to reduce heating or cooling costs.
- Shade Factor is defined as the level of shade that the blind provides in blocking out the direct sunlight.
- Glare Reduction is defined as the reduction in the level of glare to provide optimum eye comfort.
- UV Protection is defined as the level of UV light that is blocked out by the material.

# COMFORT RATING has been devised by Hunter Douglas Limited with the assistance of Canesis Pty Ltd - an Independent Australian Fibre and Textile Research and Development Company.

# Luxaflex®

WINDOW FASHIONS

www.luxaflex.co.nz

© Copyright 2010 © Registered Trade Marks of Hunter Douglas Limited ABN 98 009 675 709. # COMFORT RATING has been devised by Hunter Douglas Limited with the assistance of Canesis Pty Ltd - an Independent Australian Fibre and Textile Research and Development Company.

New Zealand Windows Shades Limited, 2 - 6 Niall Burges Road, Mt Wellington, Auckland, New Zealand.  
 PO Box 12 785, Penrose, Auckland. Telephone 09 574 2200, Facsimile 09 573 6198